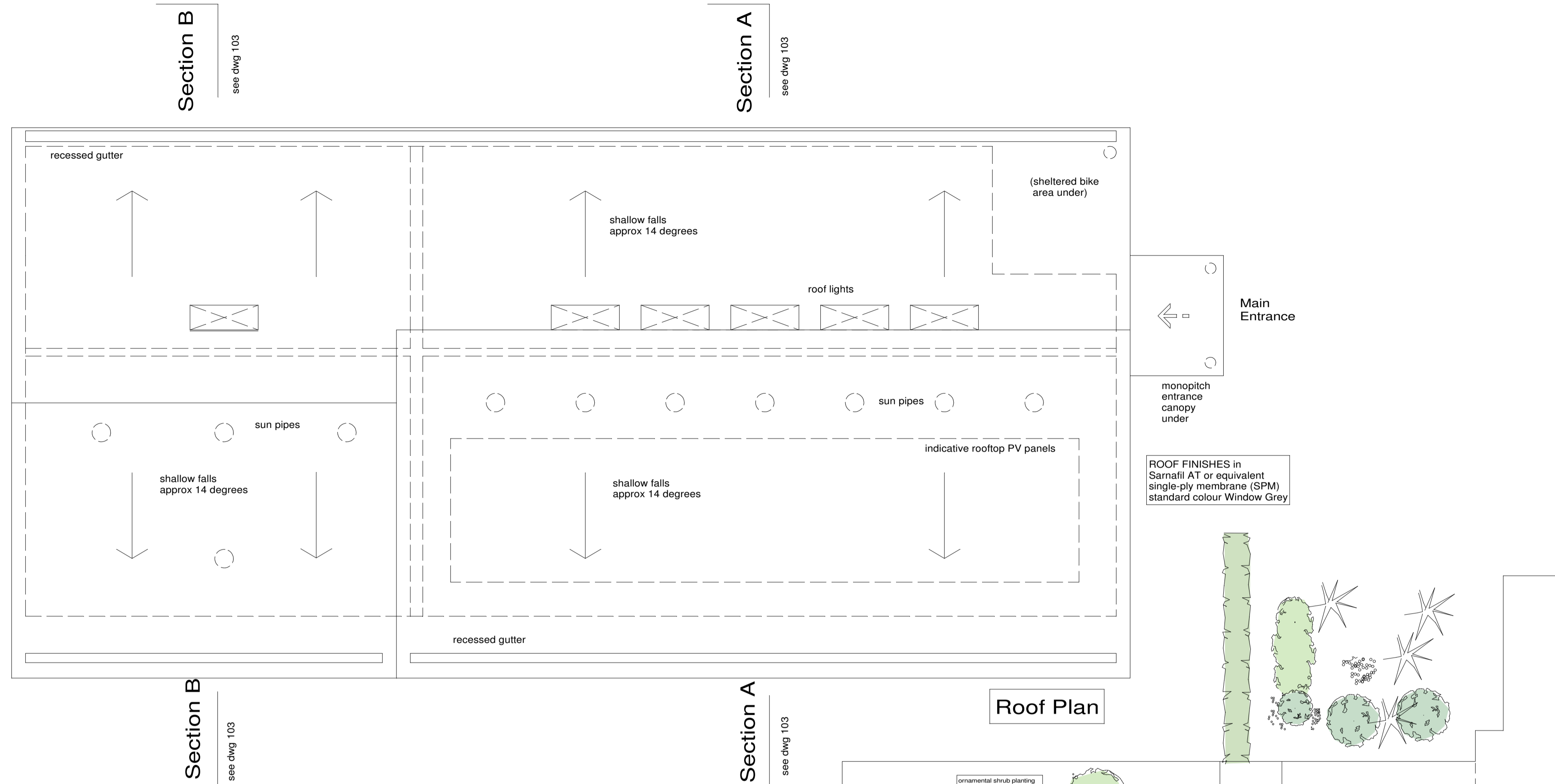
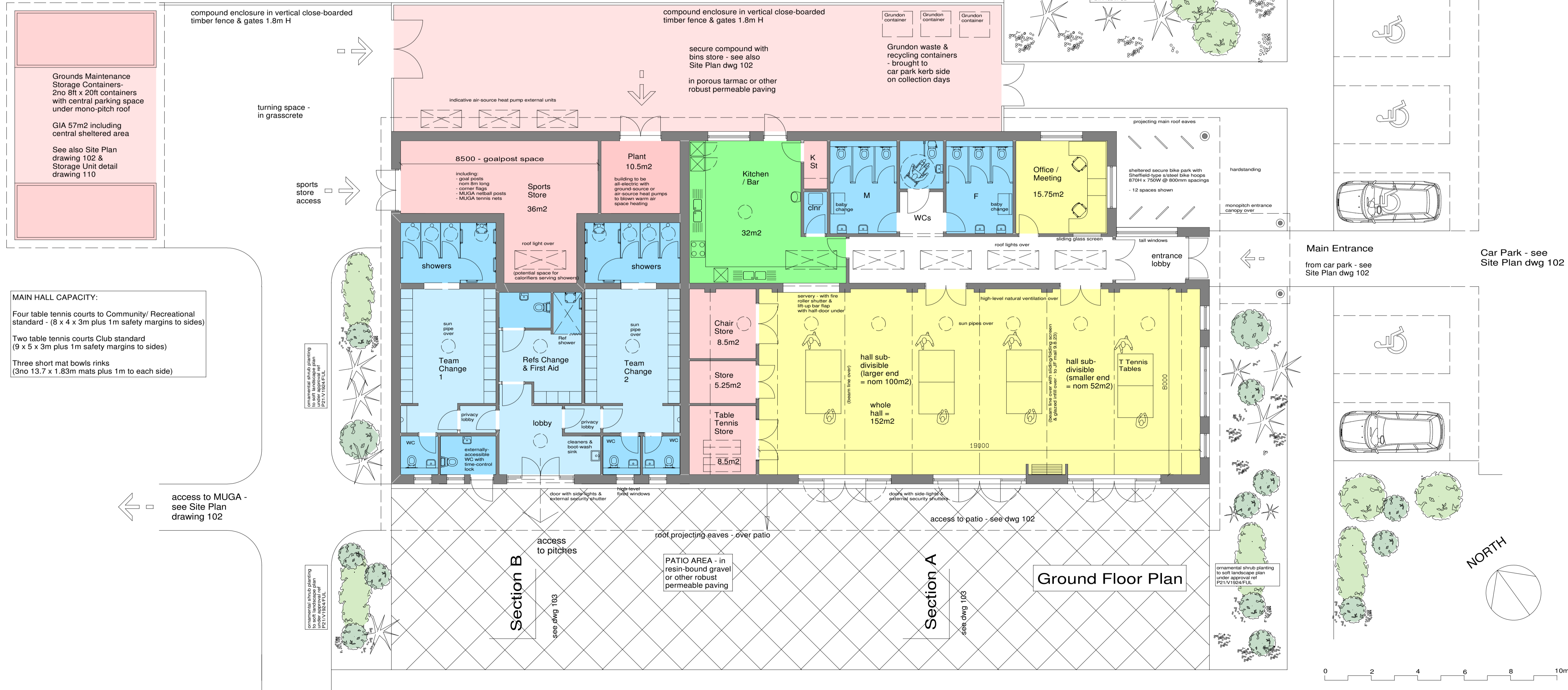


Grounds Maintenance Storage Containers under - with shallow-pitch roof in SPM finish to match Pavilion



Roof Plan

ROOF FINISHES in Sarnafil AT or equivalent single-ply membrane (SPM) standard colour Window Grey



Ground Floor Plan

MAIN HALL CAPACITY:
 Four table tennis courts to Community/ Recreational standard - (8 x 4 x 3m plus 1m safety margins to sides)
 Two table tennis courts Club standard (9 x 5 x 3m plus 1m safety margins to sides)
 Three short mat bowls rinks (3no 13.7 x 1.83m mats plus 1m to each side)

Gross Internal Areas: measured to inner face of outer walls
 Pavilion = 475m²
 External Store including central sheltered area = 57m²

Notional building costs (for Pavilion only) @ £2500 / m² = £1.2 million + VAT

Notional building costs (for Pavilion only) @ £3000 / m² = £1.425 million + VAT

minor updates for planning	5.8.24	sw	P4
minor layout updates from JF mail 9.8.23 - plus wall shading & local landscape	8.9.23	sw	P3
updates from discussion at mtg 2.8.23	8.8.23	sw	P2
preliminary issue for discussion at mtg 2.8.23	31.7.23	sw	P1
Revisions	Date	by	Rev

Client
Drayton Parish Council

Project
Walnut Meadows Pavilion
 Proposed Ground Floor & Roof Plans

SWA
STANHOPE WILKINSON ASSOCIATES ARCHITECTS © Copyright
 40 Percy Street Oxford OX4 3AA
 Tel: (01865) 883222
 E-mail: steve@swa-architects.co.uk

Scales 1:100@A1 1:200@A3 Date July 23 by sw

Job No.	Drawing No.	Rev.
23448	101	P4

