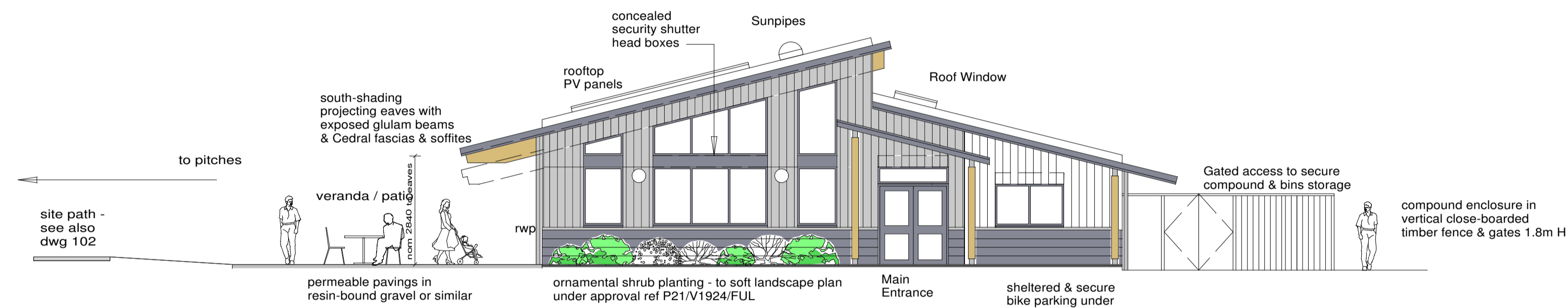


North Elevation - towards storage compound & boundary



East Elevation - towards car park

**PROPOSED MATERIALS:**

**WALLS:**  
Forticrete concrete facing blocks to plinth, colour Pewter dark grey, in shot-blasted finish.

Upper walls in vertical Cedral boarding, Click range, butt-jointed in smooth finish, 186mm wide, colour C51 Silver Grey

**DOORS & WINDOWS:**  
Proprietary combi aluminium / timber doors & windows, Ideal Combi or equivalent, with external powder-coated finish, colour Basalt Grey RAL 7012

**ROOF:**  
Mechanically-fastened SPM roof with integral gutters, Samafil AT or equivalent, colour standard Window Grey (light grey)

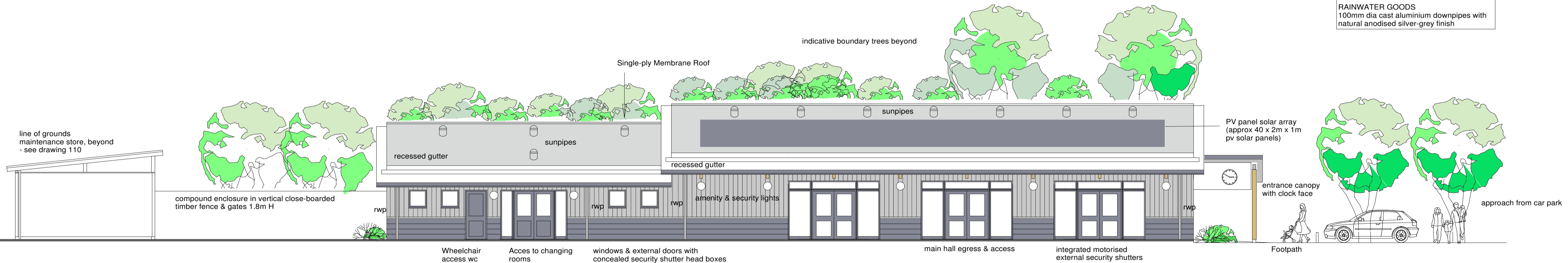
**STRUCTURAL POSTS:**  
to entrance canopy & bike parking: circular glulam engineered timber posts nom 180mm diameter, with galvanised steel connectors at foot & head; in natural timber finish in clear preservative stain

**FASCIAS & VERGES:** Cedral Steel Grey C15

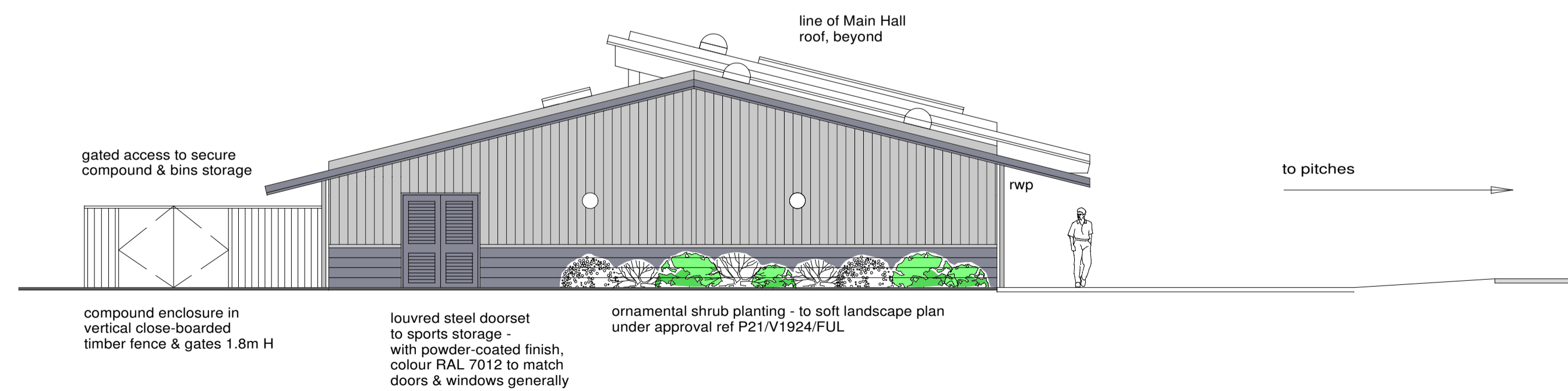
**SOFFITS:** Cedral Silver Grey (as walls)

**ROOF WINDOWS:**  
Proprietary Roof Windows & Sunpipes, Velux or equivalent, aluminium-framed with standard mid-grey powder-coat finish

**RAINWATER GOODS:**  
100mm dia cast aluminium downpipes with natural anodised silver-grey finish



South Elevation - towards pitches



West Elevation - towards MUGA

minor updates for planning	05.08.24	sw	P3
grounds maintenance store added to N & S elevations	26.09.23	sw	P2
preliminary issues: for client review & QS budget costs	12.09.23	sw / mn	P1
Revisions	Date	by	Rev

Client  
**Drayton Parish Council**

Project  
**Walnut Meadows Pavilion**

Proposed Building Elevations



**STANHOPE WILKINSON ASSOCIATES**  
ARCHITECTS © Copyright  
40 Percy Street Oxford OX4 3AA  
Tel: (01865) 883222  
E-mail: steve@swa-architects.co.uk

Scales	Date	by
1:100@A1 1:200@A3	Sept 2023	mn/sw

Job No.	Drawing No.	Rev.
<b>23448</b>	<b>105</b>	<b>P3</b>

